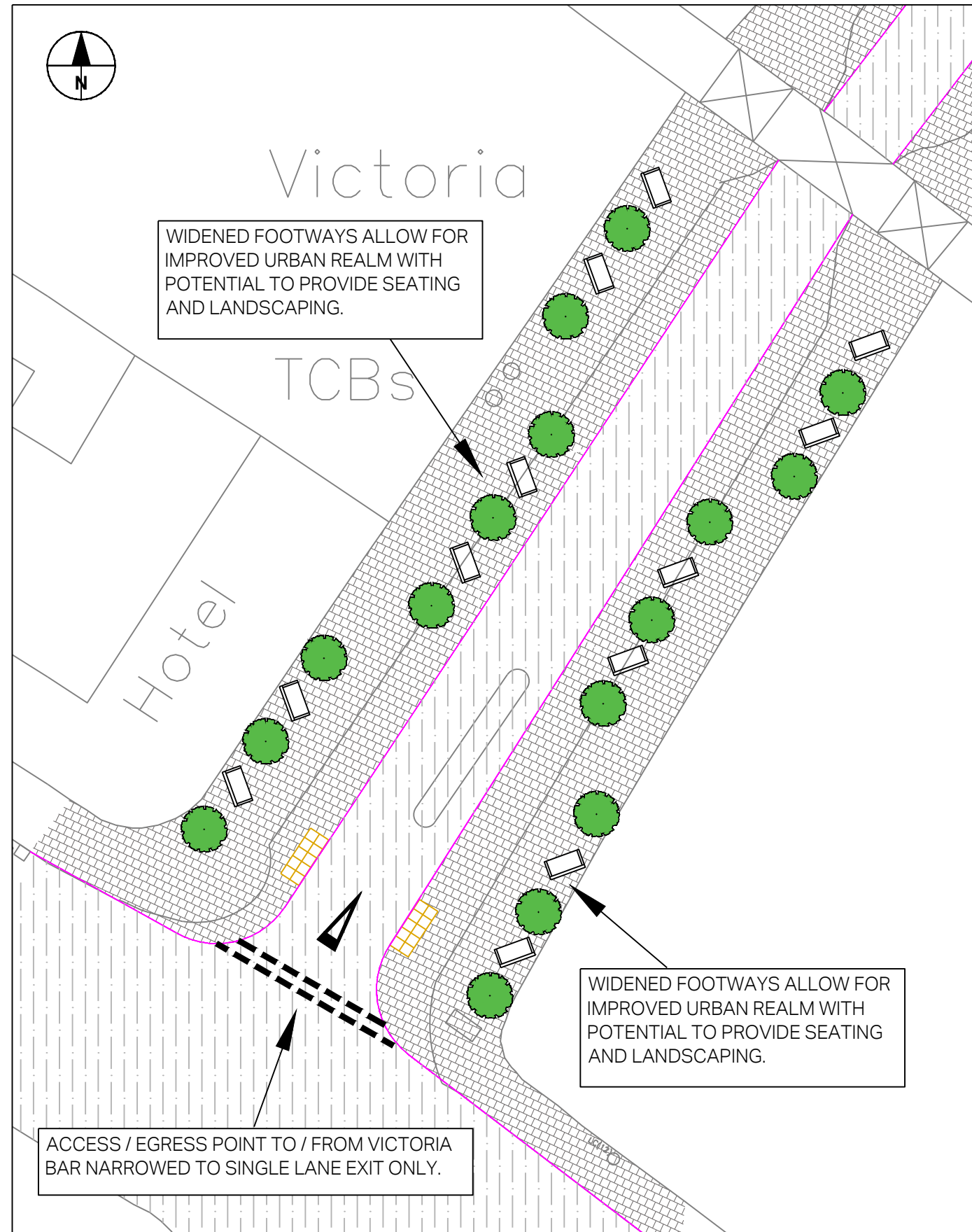
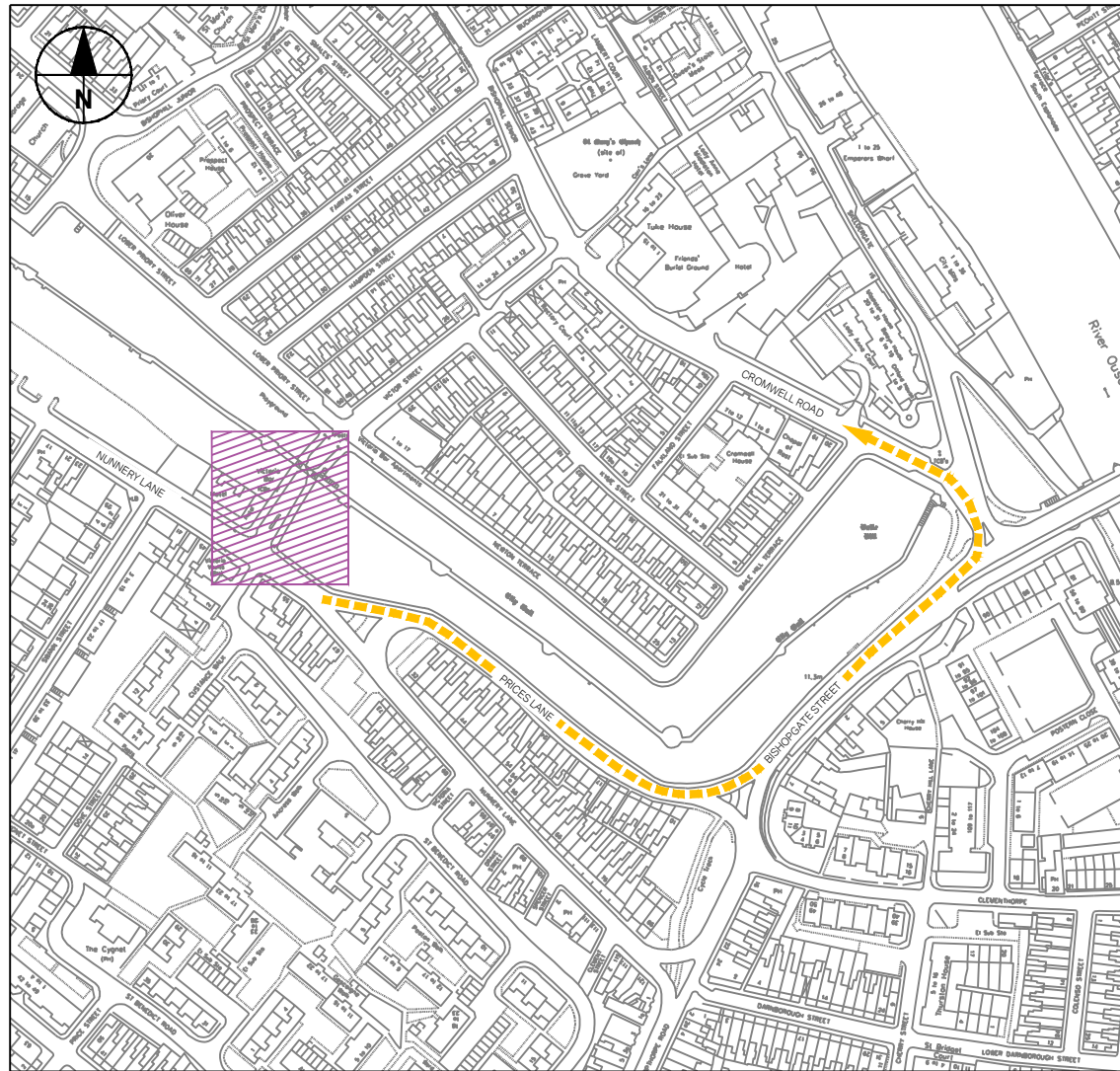








Annex D (1)

NOTES
 1. DO NOT SCALE FROM THIS DRAWING.



KEY

-  KERBLINE
-  WHITE MARKINGS
-  UNCONTROLLED TACTILE
-  FOOTWAY
-  CARRIAGEWAY
-  BOLLARD

BASED UPON THE ORDNANCE SURVEY MAPPING WITH THE PERMISSION OF THE CONTROLLER OF HER MAJESTY'S STATIONERY OFFICE. CROWN COPYRIGHT. UNAUTHORISED REPRODUCTION INFRINGES CROWN COPYRIGHT AND MAY LEAD TO PROSECUTION OR CIVIL PROCEEDINGS. CITY OF YORK COUNCIL, LICENCE NO. 1000 20818, 2006

ISSUE/REVISION

NO	DATE	DESCRIPTION
P01	10.07.2019	FIRST ISSUE
I/R	DATE	DESCRIPTION

SHEET TITLE
 VICTORIA BAR ACCESS
 OPTION 6 - PRIORITY CONTROLLED
 EXIT FOR ALL TRAFFIC

DRAWING NUMBER
 TST-VICBAR-P-006

ISO A3 297mm x 420mm
 DESIGN: OG
 CHECKED: RN
 Last saved by: NORFOLKRR(2019-08-07) Last Plotted: 2019-08-07
 Filename: C:\USERS\NORFOLKRR\DESKTOP\VICTORIA BAR EXIT ALL V1.DWG